

QUICKSTAND LITE REWORK INSTRUCTIONS

OVERVIEW/BACKGROUND

Below are step-by-step instructions to rework your QuickStand Lite. If you have any questions, contact Humanscale Support at QSLinquiry@humanscale.com or **855-319-0315**.

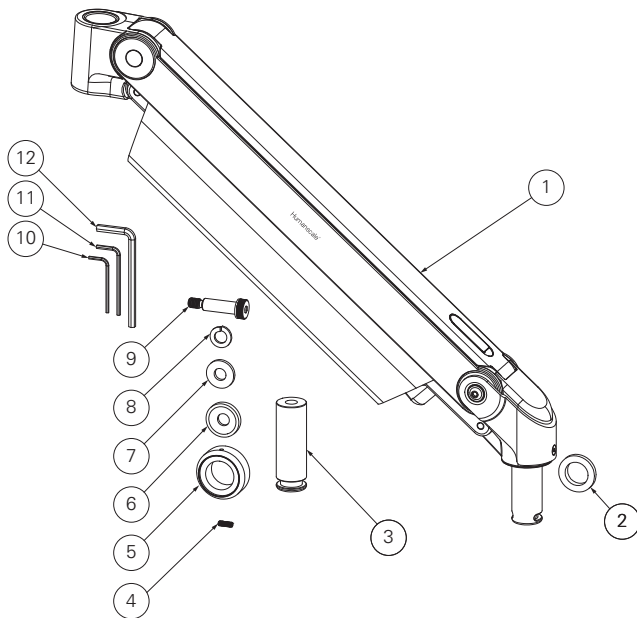
DIFFICULTY

Intermediate

REWORK TIME

25 Minutes

REWORK KIT CONTENTS



Item Number	Description	Quantity Included
1	M8 Long Dynamic Arm	1
2	Plastic Link Washer	1
3	Arm Link Pin	1
4	4 mm Set Screw	1
5	Arm Link Pin Collar	1
6	Spherical Washer	1
7	10 mm Washer	1
8	Lock Washer	1
9	Shoulder Bolt	1
10	2 mm Allen Key	1
11	2.5 mm Allen Key	1
12	5 mm Allen Key	1

REQUIRED TOOLS

M2 / M2.5 / M5 Allen Keys (provided)
Torque wrench w/ M5 Hex socket (recommended)

MATERIAL DISPOSITION

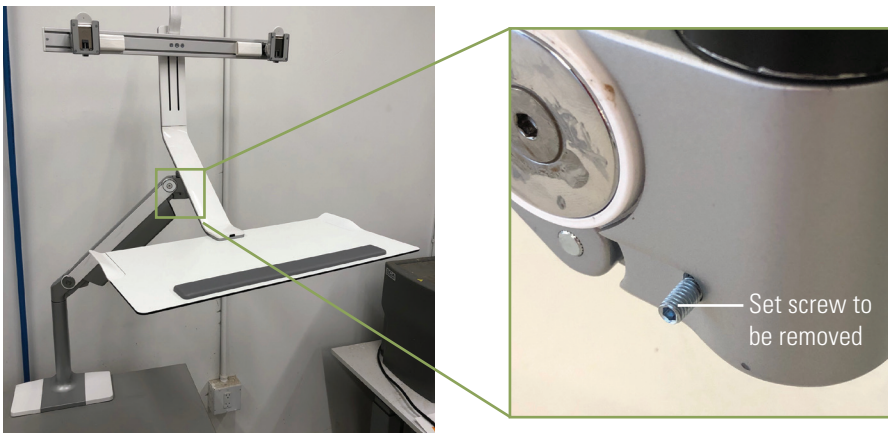
Leftover parts should be recycled locally if possible.

QUICKSTAND LITE REWORK INSTRUCTIONS

- 1 Find a safe place to store monitors, mice and any other peripherals that may be installed on the QuickStand Lite (QSL).
- 2 Check if keyboard and mouse are hardwired. If so, trace cables back to computer port or dock. Label cables carefully to prevent errors when reinstalling. Unplug cables and snake wires back through M8 long dynamic arm ("dynamic arm") cable channel. Remove plastic cover from QSL head and remove wires to free keyboard and mouse and set them aside. Remove any additional items that are on the keyboard platform. Raise QSL to highest position to remove monitors. **WARNING: DO NOT REMOVE THE MONITORS UNLESS THE QSL IS IN THE HIGHEST POSITION.** Remove the monitors, one at a time and stow them in a safe place.



- 3 Free the QSL head by completely removing the 2.5 mm allen screw on front end of the dynamic arm to free the arm link pin.

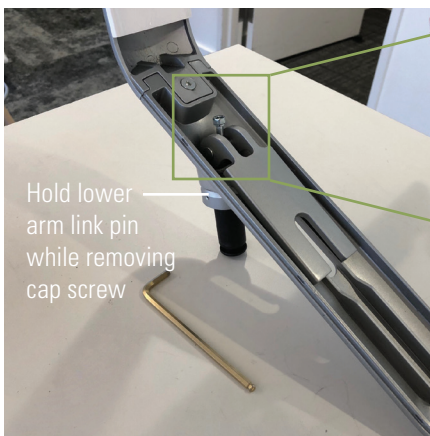


QUICKSTAND LITE REWORK INSTRUCTIONS

- 4 With the dynamic arm in the fully upright position, lift the QSL head straight up so that the arm link pin comes completely out of the socket on the end of the dynamic arm. Carefully put the QSL head with the keyboard platform and crossbar (if included) onto the work surface/desk. Set aside the plastic link washer to be reused in step #14. Remove plastic cover. (Plastic cover may have already been removed in step 2.)



- 5 Using the 5mm hex key, loosen the cap screw that passes through the release lever and attaches the QSL head to the arm link pin. You may have to hold the arm link pin, from below the QSL head, with your free hand so it does not turn as you loosen the bolt.



- 6 Continue loosening this screw until it can be removed from the unit. Remove the cap screw with the release lever, and all washers that the screw passes through. Remove the arm link pin, which will be replaced in the upgrade process. QSL head assembly is now resting on the work surface ready to be reassembled with the replacement parts.

QUICKSTAND LITE REWORK INSTRUCTIONS

7 Dispose/recycle all parts all parts except dome washer. Items to be discarded are as follows:

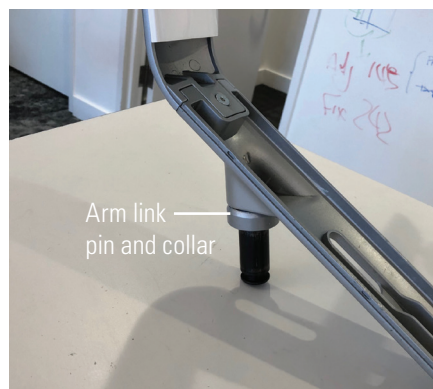
- Shoulder bolt
- Lever washer
- Cam pin
- Lever
- Rectangular cam fulcrum
- Rectangular ring
- Spherical washer
- Arm link pin collar
- Arm link pin



8 Replacement parts ready to be installed:

- Lock washer (8)
- 10 mm washer (7)
- Spherical washer (6)
- Shoulder bolt (9)
- Arm link pin (3)
- Arm link pin collar (5)
- Aluminum dome washer (retained for reuse)

Place lock washer, 10mm washer and spherical washer onto shoulder bolt. Place arm link pin with collar and dome washer seated in the collar under the QSL head as shown. Insert shoulder bolt, with assembled washers, through hole in QSL head and into arm link pin.



QUICKSTAND LITE REWORK INSTRUCTIONS

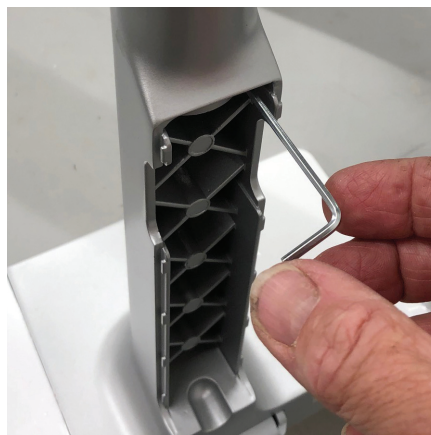
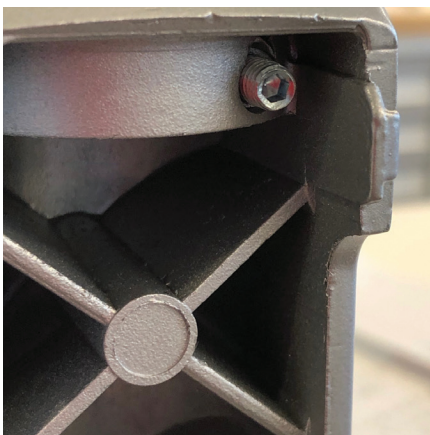
- 9 Tighten the bolt with the 5mm hex key. Bolt should be firm with a little bit of give. If the arm link pin rotates as you tighten the shoulder bolt, hold it steady with your free hand.



- 10 Remove the cable cover from the rear of the base by sliding it up vertically and set it aside.



- 11 Remove 2.5 mm allen screw.



QUICKSTAND LITE REWORK INSTRUCTIONS

- 12 Carefully remove the dynamic arm by lifting straight up, allowing the arm link pin to come clear out of the base socket. Existing arm may be disposed/recycled locally.



- 13 Install the new M8 Long Dynamic arm, making sure the plastic washer stays on the dynamic arm link pin as it slides into the QSL base socket.

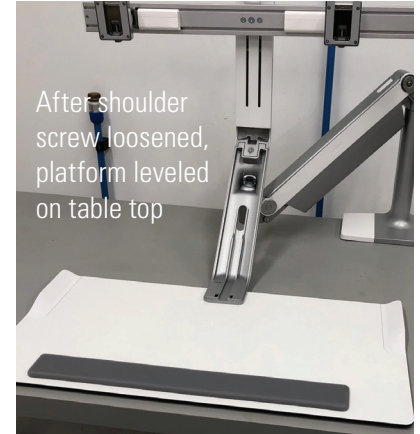
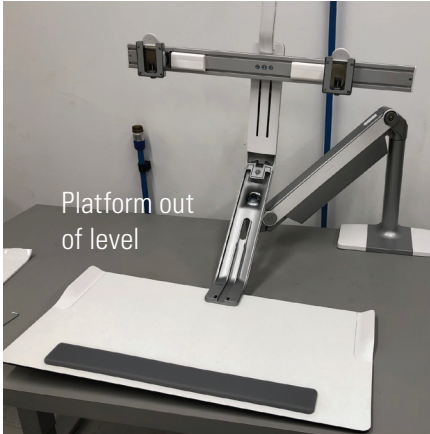


- 14 Reinstall QSL head, making sure that the plastic link washer stays in place on the link pin as it is inserted into the dynamic arm socket. Re-tighten set screws on either end of the dynamic arm. Position the QSL keyboard platform on a flat desk or work surface.



QUICKSTAND LITE REWORK INSTRUCTIONS

- 15** Loosen 5mm shoulder bolt one half turn, or just until platform can be easily positioned so that it is lying flat on a flat surface such as the desk or table.

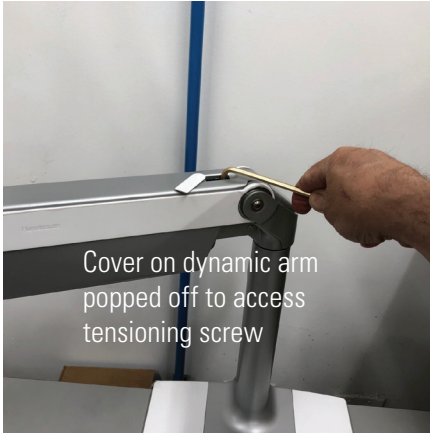


- 16** Once the platform is lying flat in the desired position, tighten the bolt as tight as possible with 5mm Allen Key. **If available, use a torque wrench and tighten to 15 ft. lbs.**



QUICKSTAND LITE REWORK INSTRUCTIONS

- 17 Reinstall the monitor(s) and adjust the monitor arm tension to balance the monitor(s). Using the 5mm hex key, turn the tension screw clockwise to increase lift of arm and reduce tension. Turn screw counterclockwise to reduce lift and add tension. QSL with monitors and keyboard on platform should stay in position without sinking down or rising up when tension is properly adjusted.



- 19 Replace all cables and plastic covers as they were before.